



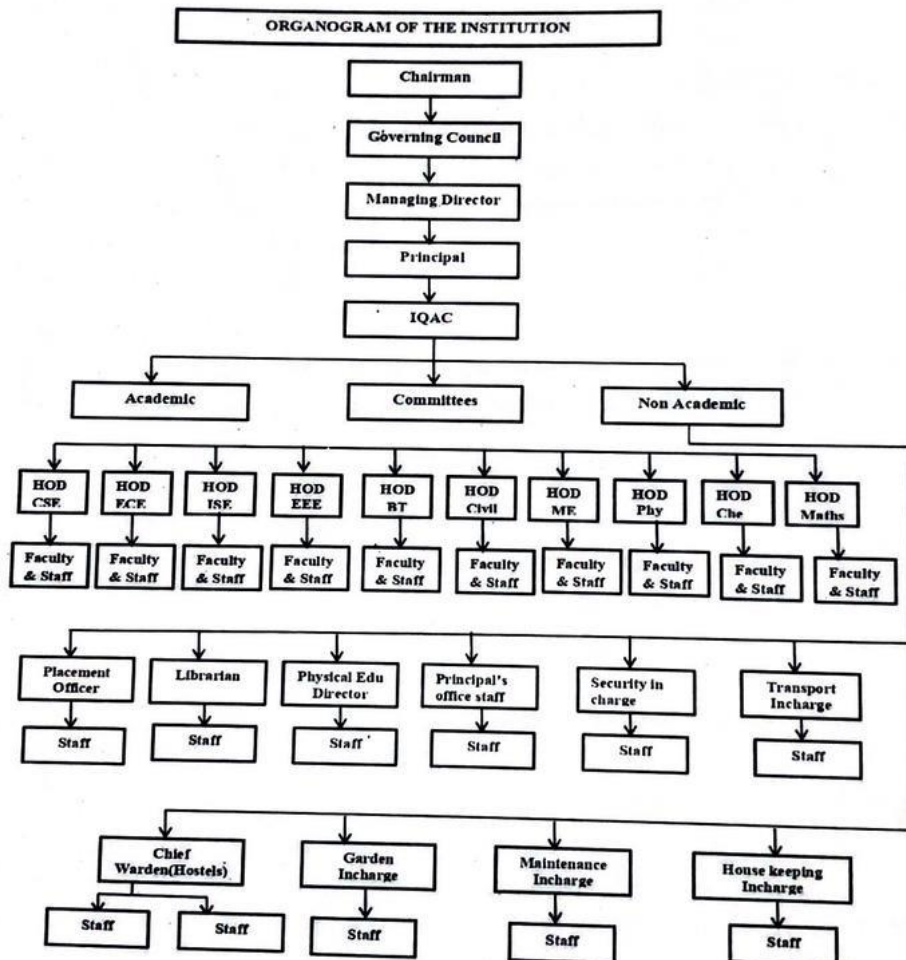
Sri Srinivasa Educational & Charitable Trust  
**SAPTHAGIRI COLLEGE OF ENGINEERING**

(Affiliated to VTU, Belagavi & Approved by AICTE, New Delhi.)

ISO 9001:2015 & ISO 14001:2015 Certified Institute

Accredited By NAAC with "A" Grade

#14/5, Chikkasandra, Hesaraghatta Main Road, Bengaluru- 560 057

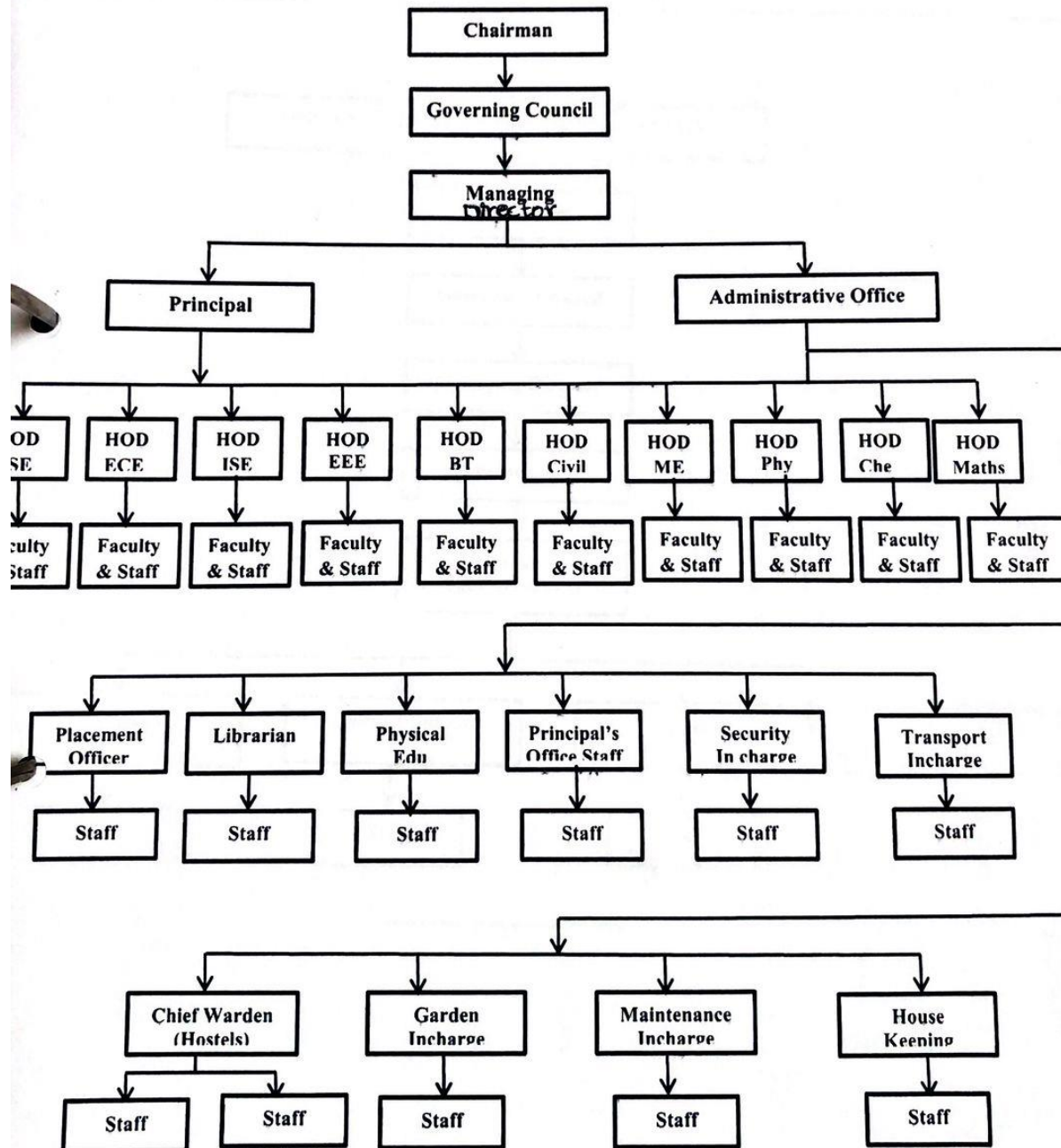


PRINCIPAL

Sapthagiri College of Engineering  
14/5, Chikkasandra, Hesaraghatta Main Road  
Bengaluru - 560 057



Srinivasa Educational & Charitable Trust  
**SAPTHAGIRI COLLEGE OF ENGINEERING**  
(Affiliated to VTU, Belagavi & Approved by AICTE, New Delhi.)  
ISO 9001:2015 & ISO 14001:2015 Certified Institute  
Accredited By NAAC with "A" Grade  
#14/5, Chikkasandra, Hesaraghatta Main Road, Bengaluru- 560 057

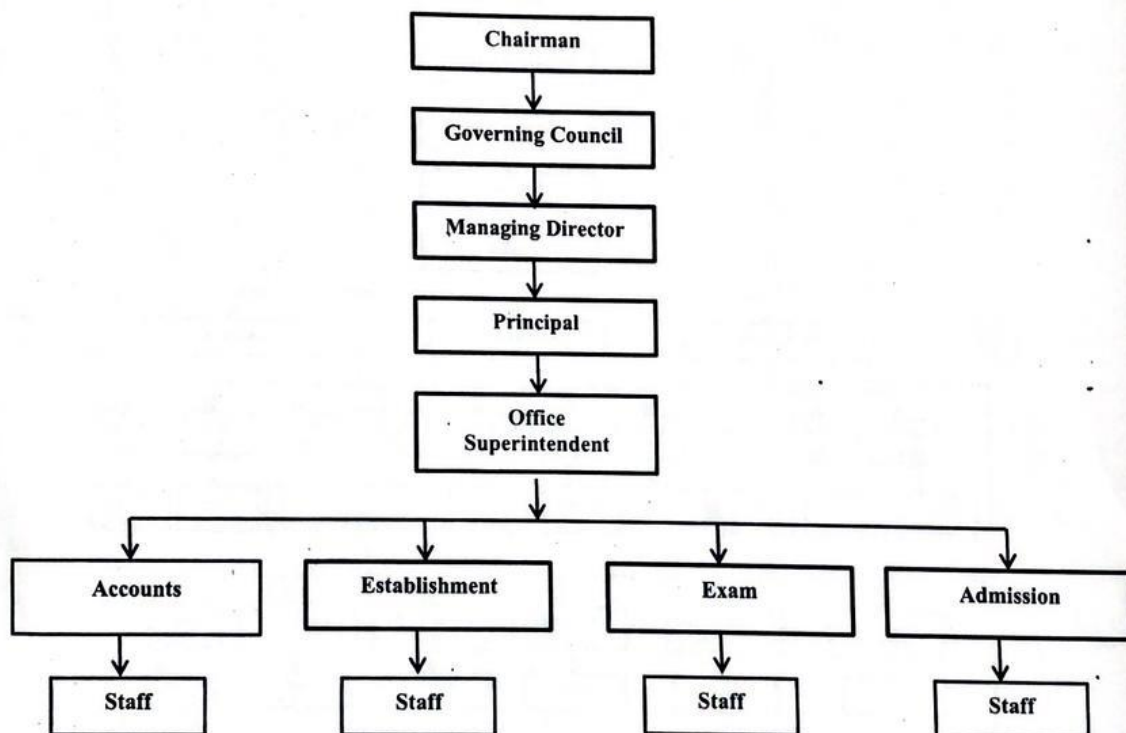


  
Principal  
Sapthagiri College of Engineering  
14/5 Chikkasandra, Hesaraghatta Main Road, Bengaluru- 560 057



Sri Srinivasa Educational & Charitable Trust  
**SAPTHAGIRI COLLEGE OF ENGINEERING**  
(Affiliated to VTU, Belagavi & Approved by AICTE, New Delhi.)  
ISO 9001:2015 & ISO 14001:2015 Certified Institute  
Accredited By NAAC with "A" Grade  
#14/5, Chikkasandra, Hesaraghatta Main Road, Bengaluru- 560 057

**ORGANOGRAM OF THE ADMINISTRATION**

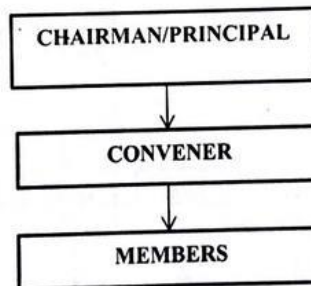


  
Principal  
Sapthagiri College of Engineering  
14/5, Chikkasandra, Hesaraghatta Main Road  
Bengaluru - 560 057



Sri Srinivasa Educational & Charitable Trust  
**SAPTHAGIRI COLLEGE OF ENGINEERING**  
(Affiliated to VTU, Belagavi & Approved by AICTE, New Delhi.)  
ISO 9001:2015 & ISO 14001:2015 Certified Institute  
Accredited By NAAC with "A" Grade  
#14/5, Chikkasandra, Hesaraghatta Main Road, Bengaluru- 560 057

**ORGANOGRAM OF COMMITTEES/CELLS**



  
**PRINCIPAL**  
Principal  
Sapthagiri College of Engineering  
14/5, Chikkasandra, Hesaraghatta Main Road  
Bengaluru - 560 057