

DEPARTMENT OF BIOTECHNOLOGY

Curriculum Feedback Analysis (2023 - 24)

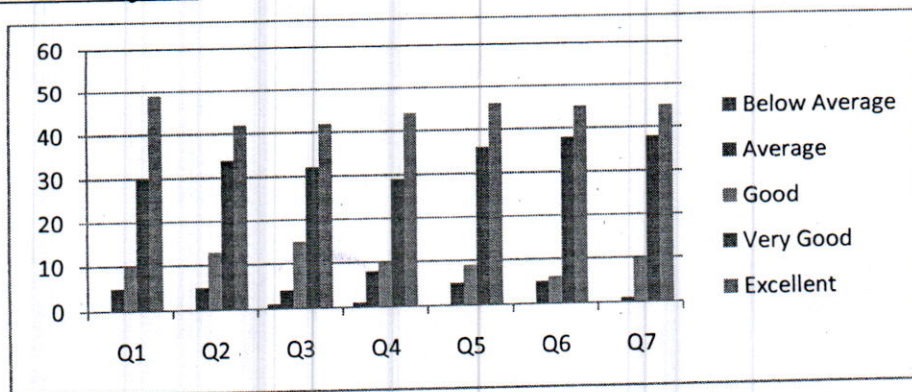
Student Feedback

- Q1. How do you rate the syllabus of the courses that you have studied in relation to the competencies expected out of the course?
- Q2. How do you rate the allocation of the credits to the courses?
- Q3. Relevance for implementation in projects?
- Q4. How do you rate the electives offered in relation to the technological advancements?
- Q5. How do rate the evaluation scheme designed for each of the course?
- Q6. How do you rate the percentage of courses having LAB components?
- Q7. Curriculum is sufficient to make you analyze the engineering problems and its suitable solution?

Responses (Total 94 Responses)

Score	Q1	Q2	Q3	Q4	Q5	Q6	Q7
Below Average	0	0	1	1	0	0	0
Average	5	5	4	8	5	5	1
Good	10	13	15	10	9	6	10
Very Good	30	34	32	29	36	38	38
Excellent	49	42	42	44	46	45	45

Feedback Analysis



(Signature)

Principal
Sapthagiri College of Engineering
14/5, Chikkasandra, Hesaraghatta Main Road
Bengaluru - 560 057

(Signature)

Head of HOD, BT Department
Dept. of Bio -Technology
Sapthagiri College of Engineering
No. 57/1, Chikkasandra
Hesaraghatta Main Road
Bangalore -57



Sri Srinivasa Educational & Charitable Trust

SAPTHAGIRI COLLEGE OF ENGINEERING

(Affiliated to Visvesvaraya Technological University, Belagavi and Approved by AICTE-New Delhi)

(Accredited by NAAC with "A" Grade and Accredited by NBA for CSE, ECE, EEE, ISE and ME)

#14/5, Hesarghatta Main Road, Chikkasandra, Bengaluru, Karnataka -560057

Department of Electrical and Electronics Engineering

Student Curriculum Feedback Analysis (2023 - 24)

- Q1. How do you rate the syllabus of the courses that you have studied in relation to the competencies expected out of the course?
- Q2. How do you rate the allocation of the credits to the courses?
- Q3. Relevance for implementation in projects?
- Q4. How do you rate the electives offered in relation to the technological advancements?
- Q5. How do rate the evaluation scheme designed for each of the course?
- Q6. How do you rate the percentage of courses having LAB components?
- Q7. Curriculum is sufficient to make you analyze the engineering problems and its suitable solution?

Responses (Total 100 Responses)

Score	Q1	Q2	Q3	Q4	Q5	Q6	Q7
Below Average	1	2	2	6	2	2	5
Average	5	4	3	6	2	9	5
Good	19	14	15	21	24	25	22
Very Good	44	42	41	35	43	30	39
Excellent	31	38	39	32	29	34	28

Analysis

Principal

Sapthagiri College of Engineering
14/5, Chikkasandra, Hesarghatta Main Road
Bengaluru - 560 057



Sri Srinivasa Educational & Charitable Trust

SAPTHAGIRI COLLEGE OF ENGINEERING

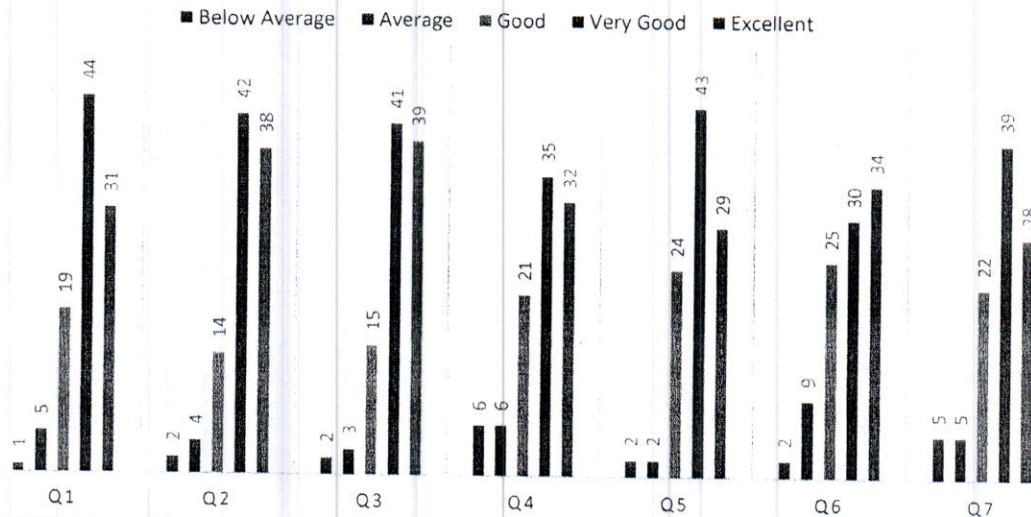
(Affiliated to Visvesvaraya Technological University, Belagavi and Approved by AICTE-New Delhi)

(Accredited by NAAC with "A" Grade and Accredited by NBA for CSE, ECE, EEE, ISE and ME)

#14/5, Hesarghatta Main Road, Chikkasandra, Bengaluru, Karnataka -560057

Department of Electrical and Electronics Engineering

CHART TITLE



Suggestions:

1. The syllabus generally aligns with the expected competencies, but could include more industry-relevant topics and practical applications.
2. Excellent
3. Good
4. The electives offered cover a broad range, but could better reflect recent technological advancements and emerging fields.
5. The evaluation scheme is well-rounded, though incorporating more practical assessments and project-based evaluations could improve its effectiveness.
6. Its good
7. The curriculum offers a strong basis for analyzing engineering problems, but could further integrate critical thinking and multidisciplinary approaches for better problem-solving.

Principal
Sapthagiri College of Engineering
14/5, Chikkasandra, Hesarghatta Main Road
Bengaluru - 560 057

HOD, EEE

PROF & HOD

Department of Electrical & Electronics Engineering
Sapthagiri College of Engineering
Bengaluru - 560057

**REPORT ON STUDENTS FEEDBACK ANALYSIS
ACADEMIC YEAR 2022-23**

- 1. How do you rate the syllabus of the courses that you have studied in relation to the competencies expected out of the course?**

From the analysis report, it was observed that, 72 % of the student said that meet the expected competencies out of the course, 28 % of the student said is very good with the syllabus.

- 2. How do you rate the allocation of the credits to the courses?**

Majority of the students, i.e 70 % have rated excellent about the allocation of course, 30 % of students have rated very good.

- 3. Relevance for implementation in projects**

80 % of the students have observed that the curriculum is excellent in relevance to the implementation of projects, 20% of students feel that it is very good/

- 4. How do you rate the electives offered in relation to the technological advancements?**

70 % of the students have rated that the syllabus is excellent which is relevant to the technological advancements, 30% of students feel that it is very good.

- 5. How do rate the evaluation scheme designed for each of the course?**

73 % of the students have a opinion that the evaluation scheme designed for each of the course is excellent, 27% of students feel that it is very good.

- 6. How do you rate the percentage of courses having LAB components?**


70 % of the students have rated excellent that the syllabus contain maximum percentage of courses having LAB components, 30% of students have rated very good.

- 7. Curriculum is sufficient to make you analyze the engineering problems and its suitable solution**

87 % of the students feel that the syllabus is excellent which makes analyze the engineering problems and its suitable solution, 13% of students feel very good.


Coordinator


Professor & Head
Department of Mechanical Engineering
Sapthagiri College of Engineering
Bengaluru - 560 057.


Principal
Sapthagiri College of Engineering
Chikkasandra, Hesaraghatta
Bangalore-560 057.

SAPTHAGIRI COLLEGE OF ENGINEERING

(Affiliated to Visvesvaraya Technological University, Belagavi & Approved by AICTE, New Delhi)
An ISO 9001:2015 and 14001:2015 Certified Institution, Accredited by NAAC -A GRADE

#14/5, Chikkasandra, Hesaraghatta Main Road, Bengaluru - 560057

Phone:080-28372800/1/2 www.sapthagiri.edu.in Fax: 080-28372797

DEPARTMENT OF BIOTECHNOLOGY

Curriculum Feedback Analysis (2023 - 24)

Alumni Feedback

Q1.When you compare yourself with other counterparts from other Institution, you feel that you got most of all the facilities which is not available in other Institution.

Q2.Learning value (in terms of skills, concepts, knowledge, analytical abilities or broadening perspectives)

Q3.Curriculum is sufficient to make you analyze the engineering problems and its suitable solution

Q4.How do you rate the learning experience in terms of their relevance to the real life application

Q5.Ability to work in teams

Q6.Ability to link theory to practice

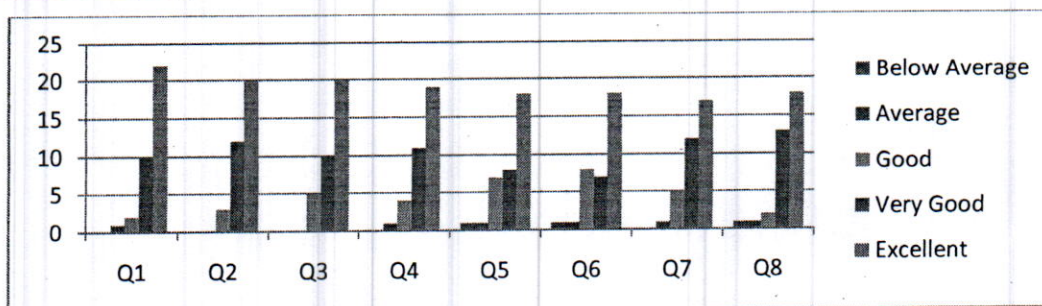
Q7.How do you rate the course/curriculum content that you have learnt in relation to your current job

Q8.Compatibility with industry standards

Responses (Total 35 Responses)

Score	Q1	Q2	Q3	Q4	Q5	Q6	Q7	Q8
Below Average	0	0	0	0	1	1	0	1
Average	1	0	0	1	1	1	1	1
Good	2	3	5	4	7	8	5	2
Very Good	10	12	10	11	08	7	12	13
Excellent	22	20	20	19	18	18	17	18

Feedback Analysis



[Signature]

HOD, BT
Head of the Department
Dept. of Bio-Technology
Sapthagiri College of Engineering
No. 57/1, Chikkasandra
Hesaraghatta Main Road
Bangalore -57

[Signature]
Principal
Sapthagiri College of Engineering
14/5, Chikkasandra, Hesaraghatta Main Road
Bengaluru -560 057



Sri Srinivasa Educational & Charitable Trust

SAPTHAGIRI COLLEGE OF ENGINEERING

(Affiliated to Visvesvaraya Technological University, Belagavi and Approved by AICTE-New Delhi)

(Accredited by NAAC with "A" Grade and Accredited by NBA for CSE, ECE, EEE, ISE and ME)

#14/5, Hesarghatta Main Road, Chikkasandra, Bengaluru, Karnataka -560057

Department of Electrical and Electronics Engineering

Alumni Curriculum Feedback Analysis (2023 - 24)

- Q1. How do you rate the syllabus of the courses that you have studied in relation to the competencies expected out of the course?
- Q2. How do you rate the allocation of the credits to the courses?
- Q3. Relevance for implementation in projects?
- Q4. How do you rate the electives offered in relation to the technological advancements?
- Q5. How do rate the evaluation scheme designed for each of the course?
- Q6. How do you rate the percentage of courses having LAB components?
- Q7. Curriculum is sufficient to make you analyze the engineering problems and its suitable solution?

Responses (Total 80 Responses)

Score	Q1	Q2	Q3	Q4	Q5	Q6	Q7
Below Average	2	1	2	3	4	3	3
Average	2	3	6	3	9	2	5
Good	19	16	17	19	15	21	25
Very Good	22	28	31	20	26	25	12
Excellent	35	32	24	35	26	29	35

Analysis

Principal

Sapthagiri College of Engineering
14/5, Chikkasandra, Hesarghatta Main Road
Bengaluru - 560 057



Sri Srinivasa Educational & Charitable Trust

SAPTHAGIRI COLLEGE OF ENGINEERING

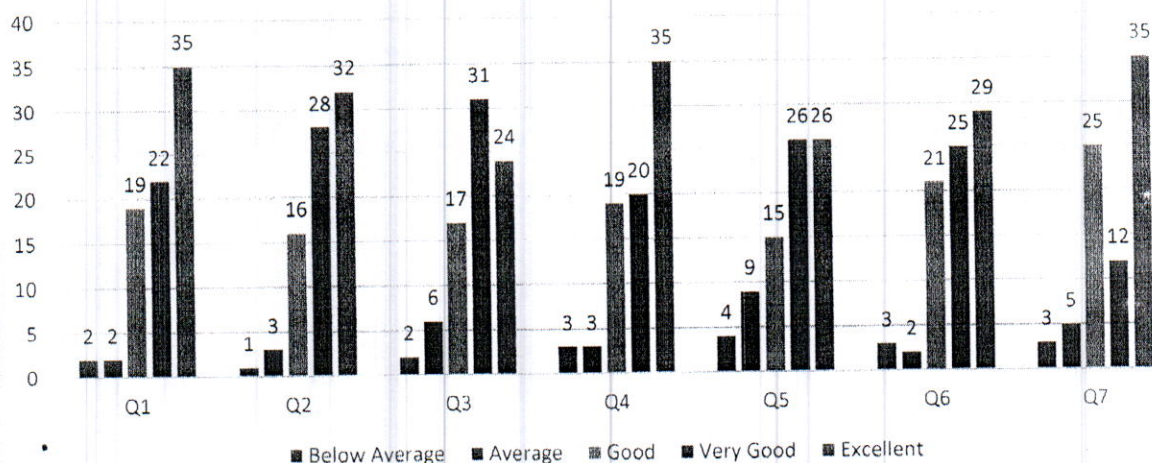
(Affiliated to Visvesvaraya Technological University, Belagavi and Approved by AICTE-New Delhi)

(Accredited by NAAC with "A" Grade and Accredited by NBA for CSE, ECE, EEE, ISE and ME)

#14/5, Hesarghatta Main Road, Chikkasandra, Bengaluru, Karnataka -560057

Department of Electrical and Electronics Engineering


Chart Title



Suggestions:

1. The syllabus was comprehensive and aligned well with the competencies at the time, but could benefit from updates to reflect the latest industry trends and technologies.
2. Excellent.
3. The courses provided a strong theoretical foundation.
4. The electives were useful, though some could have incorporated more focus on the latest technologies and emerging trends in the field.
5. The evaluation scheme is well-rounded, though incorporating more practical assessments and project-based evaluations could improve its effectiveness.
6. The lab components were helpful, but there could have been more opportunities for hands-on experience with advanced equipment and tools used in the industry.
7. Good.


Principal
Sapthagiri College of Engineering
14/5, Chikkasandra, Hesarghatta Main Road
Bengaluru - 560 057


HOD, EEE

PROF. & HOD
Department of Electrical & Electronics Engineering
Sapthagiri College of Engineering
Bengaluru - 560057

**REPORT ON ALUMNI FEEDBACK ANALYSIS
ACADEMIC YEAR 2022-23**

- 1 **When you compare yourself with other counterparts from other Institution, you feel that you got most of all the facilities, which is not available in other Institution**
78 % of the Alumni have excellent opinion about the institution which is enriched with all the standard facility, 15 % of Alumni feel that it is very good, 7 % of Alumni it is good request for additional facilities.
- 2 **Learning value (in terms of skills, concepts, knowledge, analytical abilities or broadening perspectives)**
From the analysis report, it could be observed that, 77 % of the Alumni strongly recommend that Learning value (in terms of skills, concepts, knowledge, analytical abilities or broadening perspectives) are enhanced, 23 % of the Alumni said it is very good.
- 3 **Curriculum is sufficient to make you analyze the engineering problems and its suitable solution**
73 % of the Alumni strongly feel that the Curriculum is sufficient to make and analyze the engineering problems and its suitable solution, 27 % of Alumni said it is very good.
- 4 **How do you rate the learning experience in terms of their relevance to the real life application**
70 % of the Alumni have rated that the Curriculum provides learning experience in terms of their relevance to the real life application, 23 % of Alumni said it is very good, 7 % of Alumni said it is Good.
- 5 **Ability to work in teams**
Majority of the Alumni i.e., 77 % have said that the curriculum is excellent which helps to work in teams, 23 % of Alumni have said very good.
- 6 **Ability to link theory to practice**
63 % of the Alumni strongly believe that the Curriculum is able to Link theory to practice through number of projects; Lab work etc., 33 % of Alumni said it is very good and 4 % of Alumni said it is Good.
- 7 **How do you rate the course/curriculum content that you have learnt in relation to your current job**
80 % of the Alumni observed that the content in the Curriculum is excellently related to current job, 17 % of Alumni said it is very good, 3 % of Alumni said it is Good and recommend implement addition content to the curriculum in different domains.
- 8 **Compatibility with industry standards**
83 % of the Alumni rated that the Curriculum is having excellent Compatibility with industry standards, 10 % of Alumni said it is very good, 7 % of Alumni said it is Good and needs implement add on courses parallel to the curriculum in different domains to reach industry standards.

Principal

Sapthagiri College of Engineering
Chikkasandra, Hesaraghatta
Bangalore-560 057

Action Taken :

The opinion of the Alumni and the benefits they are delivered and helped the institution to focus on the lacunae in the syllabus/curriculum, and add on through additional and in depth lab programs, leads on real time experience, in depth practical explanations etc., in to teaching learning methodology.


Coordinator


Principal
Sapthagiri College of Engineering
Chikkasandra, Hesaraghatta Road.
Bangalore-560 057


HOD
Professor & Head
Department of Mechanical Engineering
Sapthagiri College of Engineering
Bangalore - 560 057.

DEPARTMENT OF BIOTECHNOLOGY

Curriculum Feedback Analysis (2023 - 24)

Faculty Feedback

Q1.Do you feel that the curriculum is defined in a way to clarify your teaching goals and what you expect your students to learn?

Q2.Is the curriculum sufficient to bridge the gap between industry standards /current global scenarios and academics?

Q3.Is the timely coverage of curriculum possible in the mentioned number of hours?

Q4.Sufficient reference material and books are available for the topics mentioned in the curriculum?

Q5.The evaluation methods mentioned in the curriculum are sufficient for providing proper assessment?

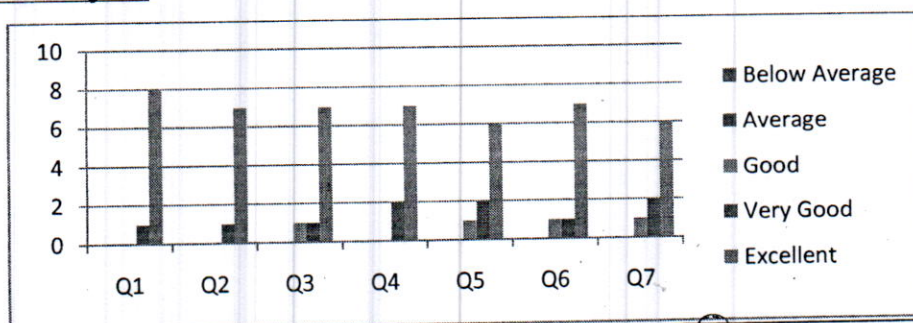
Q6.Curriculum is suitable to the course

Q7.The curriculum/course of this subject increased my knowledge and perspective in the subject area

Responses (Total 09 Responses)

Score	Q1	Q2	Q3	Q4	Q5	Q6	Q7
Below Average	0	0	0	0	0	0	0
Average	0	0	0	0	0	0	0
Good	0	0	1	0	1	1	1
Very Good	1	1	1	2	2	1	2
Excellent	8	7	7	7	6	7	6

Feedback Analysis



[Signature]

HOD, BT
Head of the Department
Dept. of Bio - Technology
Sapthagiri College of Engineering
No. 57/1, Chikkasandra
Hesaraghatta Main Road
Bangalore -57

[Stamp]
Principal
Sapthagiri College of Engineering
14/5, Chikkasandra, Hesaraghatta Main Road
Bangalore - 560 057

**REPORT ON FACULTY FEEDBACK ANALYSIS
ACADEMIC YEAR 2022-23**

- 1. Do you feel that the curriculum is defined in a way to clarify your teaching goals and what you expect your students to learn?**

Majority of the Faculties i.e., 63 % have a opinion that the curriculum is excellently defined in a way to clarify teaching goals and meet expectation of students, 30 % of Faculties have very good opinion and 7 % of Faculties said it is good.

- 2. Is the curriculum sufficient to bridge the gap between industry standards /current global scenarios and academics?**

From the analysis report, we could observe that, 60 % of the Faculties said that the curriculum is excellent to bridge the gap between industry standards /current global scenarios and academics, 37 % of the Faculties said it is very good, 7 % of the Faculties said it is good.

- 3. Is the timely coverage of curriculum possible in the mentioned number of hours?**

57 % of the Faculties feel that the syllabus can be covered in the allotted hour, 33% of Faculties feel that it is possible, 10 % of Faculties requires additional classes.

- 4. Sufficient reference material and books are available for the topics mentioned in the curriculum?**

70 % of the Faculties have a opinion that the material and books available are excellent for reference to the topics mentioned, 30 % of Faculties feel that it is very good.

- 5. The evaluation methods mentioned in the curriculum are sufficient for providing proper assessment?**

55 % of the Faculties rated that the evaluation methods mentioned in the curriculum are excellent for providing proper assessment, 45% of Faculties feel that it is very good and requires some modification.

- 6. Curriculum is suitable to the course**

53 % of the Faculties have excellent opinion that the Curriculum is suitable to the course, 47 % of Faculties feel that it is very good, and requires some add on courses for enhancement of curriculum.

- 7. The curriculum/course of this subject increased my knowledge and perspective in the subject area**


52 % of the Faculties recommended that the Curriculum/course of this subject excellently increased my knowledge and perspective in the subject area, 48 % of Faculties feel that it is very good.



Coordinator



Principal
Sapthagiri College of Engineering
Chikkasandra, Hesarghatta Road.
Bangalore-560 057



HOD
Professor & Head
Department of Mechanical Engineering
Sapthagiri College of Engineering
Bengaluru - 560 057.

**REPORT ON EMPLOYER FEEDBACK ANALYSIS
ACADEMIC YEAR 2022-23**

1 Ability to contribute to the goal of the organization.

From the analysis report, it was observed that, 72% of the employer said that meet the expected competencies out of the course, 28 % of the employer said is very good.

2 Is our curriculum compatible with the industry standards?

From the analysis report, it could be observed that, 60 % of the Employer strongly recommend that Learning value (in terms of skills, concepts, knowledge, analytical abilities or broadening perspectives) are industry standards, 40 % of the Employer said it is very good.

3 Is the curriculum sufficient to enable student analyze a given problem and identify the necessary solutions.

From the analysis report, 65% of the Employer strongly feel that the Curriculum is sufficient to make and analyze the engineering problems and its suitable solution, 25 % of Employer said it is very good.

4 Creative in response to work place challenges

From the analysis report, 60 % of the Employer have rated that excellent to deal workplace challenges, 40 % of Employer said it is very good.

5 Ability and motivation for social activity

From the analysis report, Employer i.e., 70 % has said that the motivation for Social activities is very good and remaining 30 % said well.

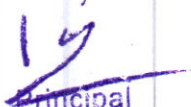
6 Technical knowledge/skill

From the analysis report, 60 % of the Employer strongly believes that the Curriculum is able to Link theory to technical knowledge / Skills. 40 % of Employer said it is very good.

7 Overall impression about their performance

From the analysis report, 55 % of the Employer observed that the content in the Curriculum is excellently related to overall performance, 45% of Employer said it is very good.


Coordinator


Principal
Sapthagiri College of Engineering
Chikkasandra, Hesaraghatta Road,
Bangalore-560 057


Professor & Head
Department of Mechanical Engineering
Sapthagiri College of Engineering
Bangalore - 560 057