



## SAPTHAGIRI COLLEGE OF ENGINEERING

#14/5, Chikkasandra, Hesaraghatta Main Road, Bengaluru- 560 057.

Web: [www.sapthagiri.edu.in](http://www.sapthagiri.edu.in), Email: [principal@sapthagiri.edu.in](mailto:principal@sapthagiri.edu.in)

Phone: 080-28 372800/1/2 Fax: 080-28 372797

### Department of Civil Engineering

The Industrial visit was initiated from Sapthagiri College of Engineering and Technology, Bangalore on 14.03.2016. The 2nd year students of civil engineering branch who are 63 in number were taken along with 2 faculty members and HOD to visit construction of industrial RCC building of High Tech Constructions Company to bridge the knowledge gap between the academic learning and the industry needs.

#### PURPOSE OF VISIT

At the hebbal area Bengaluru, the construction of the residential building was going on. The site visit involves the process of casting of slab of second floor is going on. Our main purpose is that to know the arrangement of reinforcement for column, beam and slab, and knowledge of apparatus using in slab.

#### LEARNING POINTS

Firstly got the overall information about working of construction of the site. At the site, contractor of the site gave some general information about the site and plan of site.

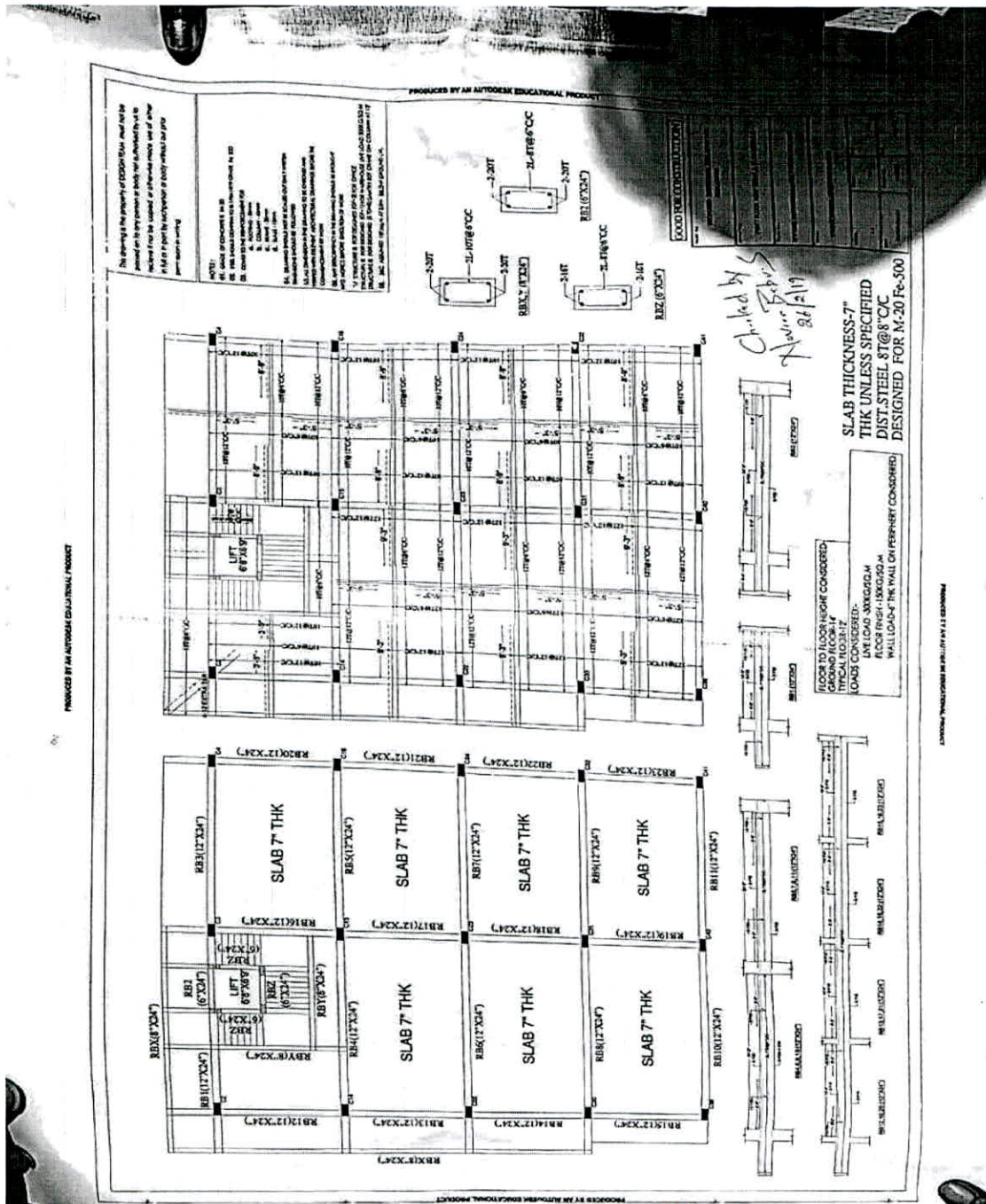
The various learning points are

- 1) Drawing
- 2) Formwork
- 3) Arrangement of reinforcement

Principal

Sapthagiri College of Engineering  
Chikkasandra, Hesaraghatta Road  
Bangalore- 560 057

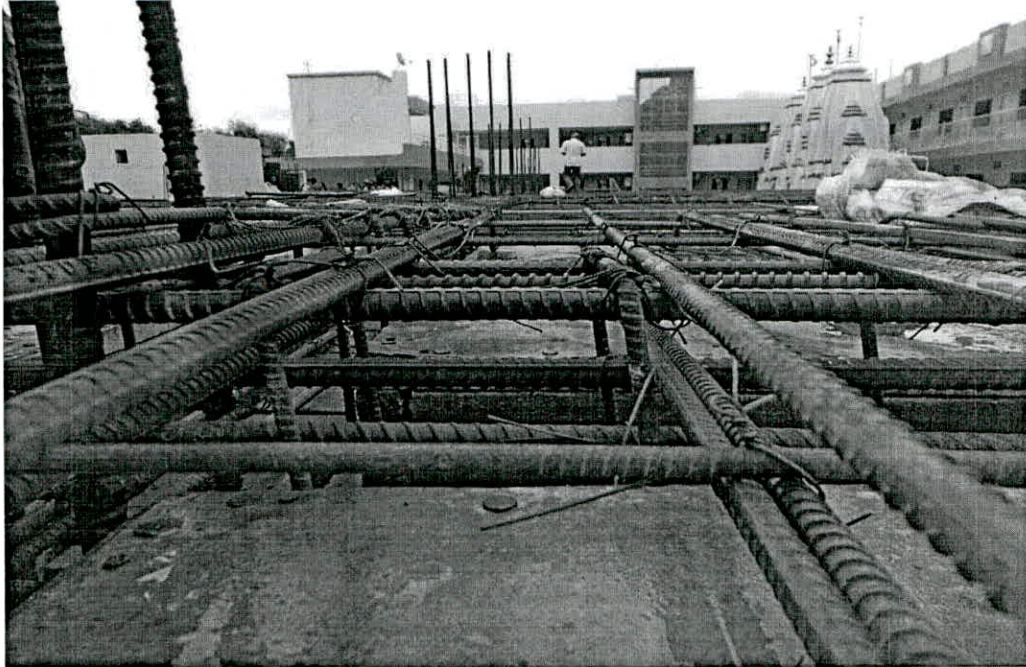
In the drawing the plan of the site which contains detailing of beams, slabs, columns



Sapthagiri College of Engineering  
Chikkasandra, Hosareghatta Road  
Bangalore-560 057

## Arrangement of reinforcement

Arrangement of reinforcement is done as given in the detail of column, beam and slab.



Detailing of slab

